

# Human TSLPR Protein

Cat. No. TSP-HM20R



## Description

<b>Source</b>	Recombinant Human TSLPR Protein is expressed from HEK293 with hFc tag at the C-Terminus.
	It contains Gly25-Lys231.
<b>Accession</b>	Q9HC73-1
<b>Molecular Weight</b>	The protein has a predicted MW of 50.8 kDa. Due to glycosylation, the protein migrates to 60-75 kDa based on Bis-Tris PAGE result.
<b>Endotoxin</b>	Less than 1 EU per µg by the LAL method.
<b>Purity</b>	> 95% as determined by Bis-Tris PAGE
	> 95% as determined by HPLC

## Formulation and Storage

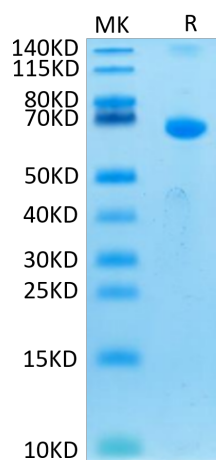
<b>Formulation</b>	Lyophilized from 0.22µm filtered solution in PBS (pH 7.4). Normally 8% trehalose is added as protectant before lyophilization.
<b>Reconstitution</b>	Dissolve the lyophilized protein in distilled water. Please refer to the Certificate of Analysis for detailed instructions.
<b>Storage</b>	-20 to -80°C for 24 months as supplied from date of receipt. -80°C for 3 months after reconstitution. Recommend to aliquot the protein into smaller quantities for optimal storage. Please minimize freeze-thaw cycles.

## Background

Thymic stromal lymphopoietin (TSLP) is an interleukin-7 (IL-7) like cytokine, which plays an important role in the regulation of immune responses to allergens. TSLP binds to a heterodimeric receptor complex composed of the IL-7 receptor alpha chain (IL-7Ralpha) and the TSLP receptor (TSLPR, also known as CRLF2).

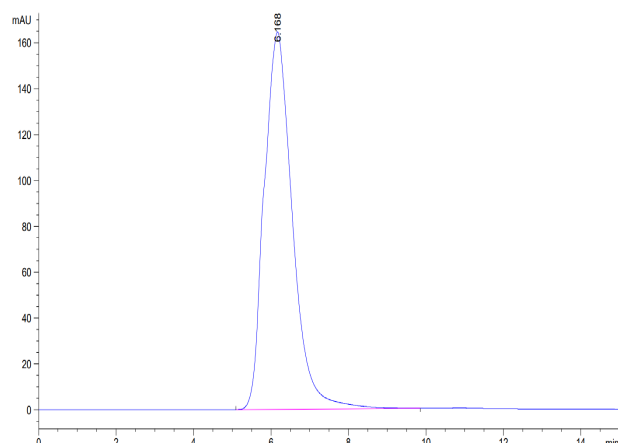
## Assay Data

### Bis-Tris PAGE



Human TSLPR on Bis-Tris PAGE under reduced condition. The purity is greater than 95%.

### SEC-HPLC



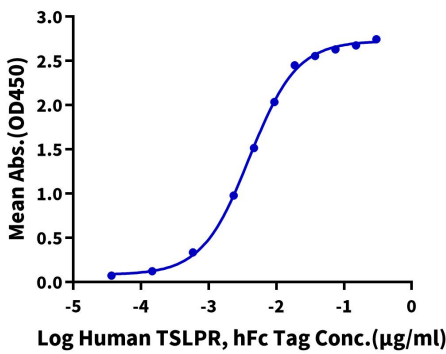
The purity of Human TSLPR is greater than 95% as determined by SEC-HPLC.

Assay Data

ELISA Data

Human TSLPR, hFc Tag ELISA

0.2µg Human TSLP (R127A, R130A), His Tag Per Well

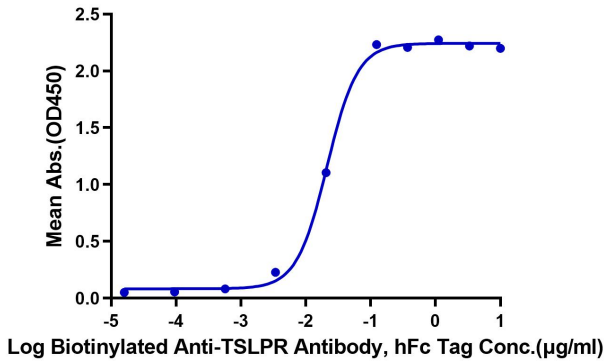


Immobilized Human TSLP (R127A, R130A), His Tag at 2µg/ml (100µl/Well). Dose response curve for Human TSLPR, hFc Tag with the EC50 of 4.0ng/ml determined by ELISA (QC Test).

ELISA Data

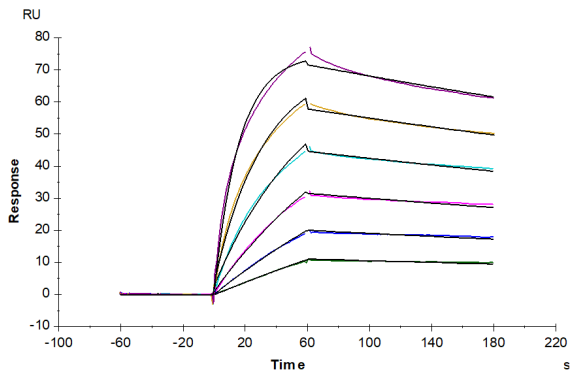
Human TSLPR, hFc Tag ELISA

0.05µg Human TSLPR, hFc Tag Per Well



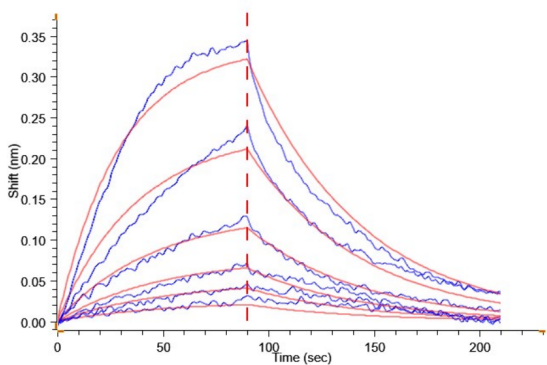
Immobilized Human TSLPR, hFc Tag at 0.5µg/ml (100µl/well) on the plate. Dose response curve for Biotinylated Anti-TSLPR Antibody, hFc Tag with the EC50 of 21.4ng/ml determined by ELISA.

SPR Data



Human TSLP, His Tag captured on CM5 Chip via Anti-His Antibody can bind Human TSLPR, hFc Tag with an affinity constant of 1.04 nM as determined in SPR assay (Biacore T200).

BLI Data



Loaded Human TSLPR, hFc Tag on ProA-Biosensor can bind Human TSLP, His Tag with an affinity constant of 31.30 nM as determined in BLI assay (Gator® Prime).